

P. MACHIBRODA ENGINEERING LTD.

GEOLOGY OF THE ARENA-EXHIBITION SITE  
CROSS SECTION A-A'

Report 0077-002

August 14, 1981

*E. A. Christiansen Consulting Ltd.*

CONSULTING GEOLOGIST

BOX 3087  
SASKATOON, SASKATCHEWAN, CANADA  
S7K 3S9

PHONE 374-6700

August 14, 1981

P. Machibroda Engineering Ltd.  
2331 Millar Avenue  
Saskatoon, Saskatchewan  
S7N 3N9

Attention: Mr. P. Machibroda

Dear Mr. Machibroda:

Enclosed is one copy of Report 0077-002 on the "Geology of the  
Arena - Exhibition site" as shown in Cross Section A-A' (Drawing  
0077-002-01).

Enclosed is also a matte positive copy of the above mentioned drawing  
as you requestd.

If you have any queries, please contact me.

Sincerely yours,

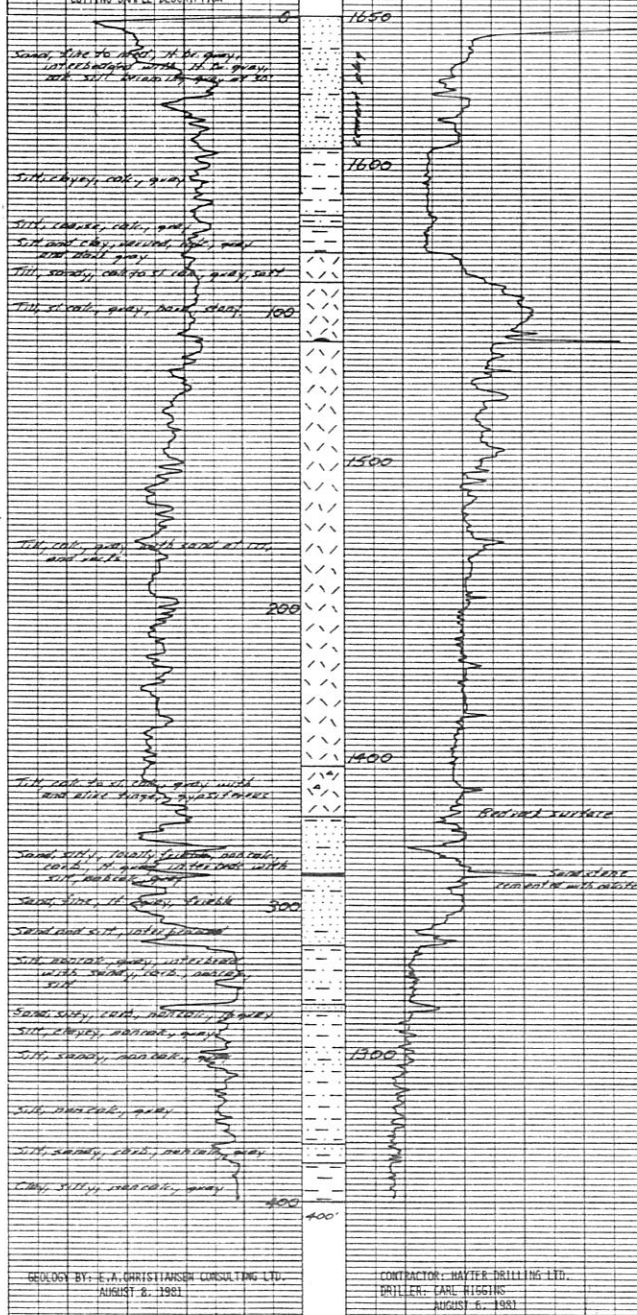


E.A. Christiansen



SURFACE ELEV.	1650 FT
TOP MAP. 10	FT CI
SP COND	MUD 1200 MILLIEMHOS/CM
SP COND	WATER 800 MILLIEMHOS/CM
SP 10 MV	R 10 OHM

CUTTING SAMPLE DESCRIPTION



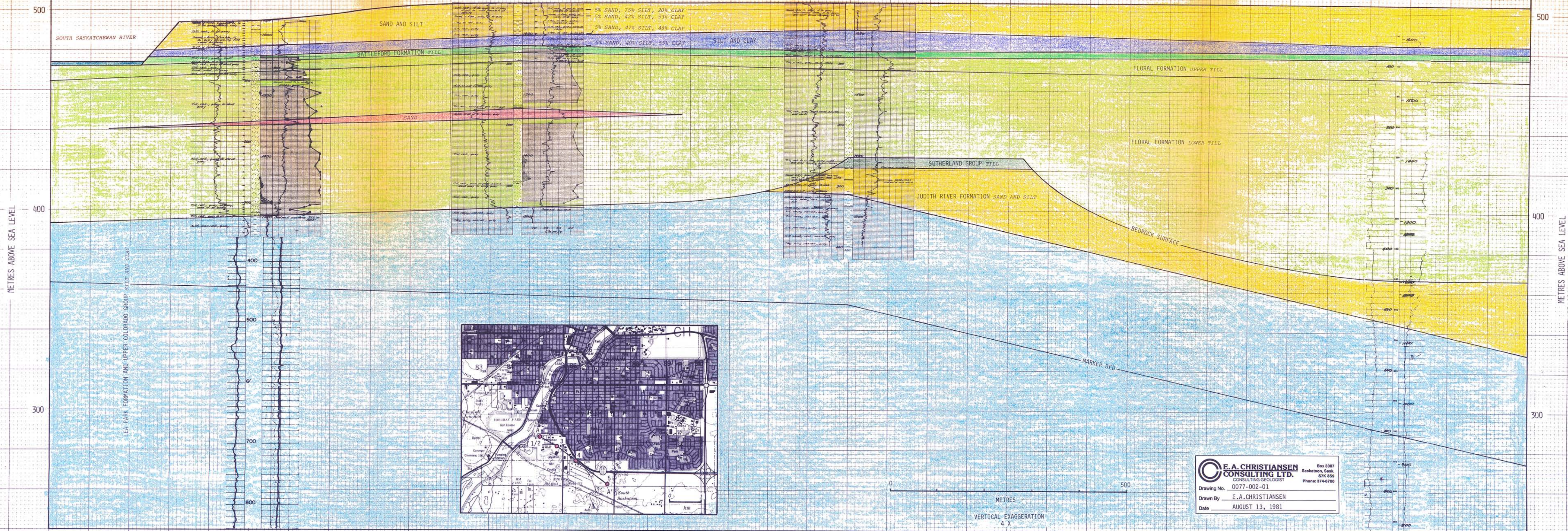


1/2  
SRC NW15-17-36-5-W3  
SASKATOON EXHIBITION NO. 1  
15-17-36-5-W3

3  
PM ARENA-EXHIBITION NO. 6  
SE16-17-36-5-W3

4  
PM ARENA-EXHIBITION NO. 7  
NE5-16-36-5-W3

5  
MIDAS SW1-16-36-5-W3



DRAWING 0077-002-01. CROSS SECTION A-A', ARENA-EXHIBITION SITE.

LIMITATION  
EXCEPT AT TESTHOLE SITES WHERE GEOLOGIC LOGS  
ARE AVAILABLE, THE GEOLOGIC CONTACTS ARE  
INFERRED AND REPRESENT GEOLOGIC MODELS THAT  
ARE BELIEVED TO BEST FIT THE INFORMATION.

**E.A. CHRISTIANSEN**  
CONSULTING GEOLOGIST  
Box 3087  
Saskatoon, Sask.  
S7N 3S9  
Phone: 374-6700  
Drawing No. 0077-002-01  
Drawn By E.A. CHRISTIANSEN  
Date AUGUST 13, 1981